



 **Autism
Together**

Day Services

Improving the lives of autistic people through developing new skills, confidence and life experiences.



About Autism Together

Supporting brighter futures

For over 50 years, Autism Together has been providing support to autistic people, offering a wide range of residential services, supported living, day services and community support from our base in Wirral, UK.

Research has shown that structured support can really make a difference to the life of an autistic person. Every person on the autism spectrum is unique, so we work with each individual to help them overcome any difficulties autism may present them with, enabling them to lead a more fulfilling life.

As a specialist autism provider, our organisation recognises that each person has a right to live their life as they choose.

We create a shared understanding of each person's strengths and needs, ensuring their preferred way of communicating these is respected and implemented by all our staff.

Our support approaches and strategies are focused on developing lifelong learning, helping to develop people's skills by considering their communication needs, thinking patterns, social understanding and sensory differences.



Our Values

Here are our values that we work by:

-  Positive Communication
-  Promote Learning
-  Be Person Centred
-  Be Respectful
-  Community Connection

Get in touch:

 0151 482 3126

Find out more at:

www.autismtogether.co.uk



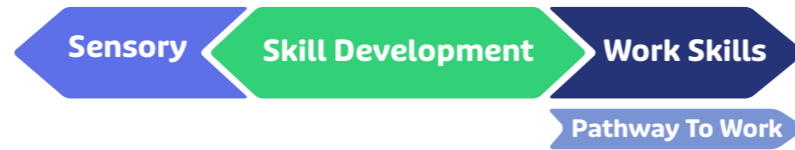
@autismtogetheruk

About Day Services

Our Day Services offer autistic people a person-centred and support-led service, with opportunities to input and design their own support journeys.

These structured, person-centred programmes offer the necessary communication strategies and support plans to enable a person to develop independently, safely and confidently.

Day Services follows a pathway that works alongside the support journey in our other services, using the different 'streams' that we have designed. A person will be placed into a certain stream based upon their personal needs and individual support journey.



STREAMS

Sensory

This stream will be personalised to an individual who may need a more sensory-based service. Activities will be adapted to address sensory needs and individuals will be able to participate in activities that stimulate their interests. These activities will always have an outdoor-based activity included in them.



Skills Development The activities under this curriculum will support development of all skills, recognising spikey profiles and supporting the development of skills in a holistic way, allowing for individuals to have a wide range of opportunities.

Work Skills These activities will be aimed at individuals who want to work more independently on tasks. The sessions will be designed to be more complex than the ones in the skills development stream and will be aimed at promoting skills that could be transferred to the Pathway to Work stage.

Pathway to Work

This stage is for individuals who would like to look at employment opportunities and potentially progress to paid employment. These sessions will again be person-centred and designed to build the skills needed to access employment.

The Pathway to Work Co-Ordinator will work closely with a group of individuals to support them to choose employment opportunities – this may start with volunteering.

We have flexible opportunities across Wirral, in various locations, designed to suit the needs of all the people we support, with services offering a varied timetable of activities.

Sessions include:

- **Animal Care** working with alpacas, goats, chickens, pigs, hens and guinea pigs.
- **Art**
- **Café**
- **Community-based excursions**
- **Cooking and life skills**
- **Dance and performing arts**
- **Gym**
- **Media**
- **Music**
- **Photography**
- **Use of machinery,** including tractors, ride on mowers, drills, strimmers.
- **and many more activities!**

These sessions are underpinned by a range of achievement awards the people we support can work towards. We have our own Awards Co-ordinator who will support everyone to achieve various awards linked to the activities they choose to participate in. These awards are given in recognition of completing ASDAN, John Muir, Gateway and e-learning courses.



Support Journey

Right support, Right time, Right location



Joining Autism Together

Our staff are knowledgeable, experienced and ready to support autistic people right through their journey with Autism Together. Our team gets to know the person we are supporting, using an holistic strengths based assessment.

Following the assessment, and if we have assessed we can meet the needs of the person, we will recommend an appropriate placement. We will also offer person-centred autism approaches to support the person in the service we have received the referral for.

Circle of support
Family
Social Services
Health
Friends
Support staff

Day Services

Our range of Day Services are about offering autistic people meaningful, realistic and achievable training, on the job work experience and valuable life skills. These structured, person-centred programmes offer the necessary communication strategies and support plans, enabling the person to develop independently, safely and confidently.



Residential Care

Our Residential service offers registered residential care in a variety of different types of housing across Wirral and Cheshire.

We work with the people we support to help each individual lead as fulfilling and meaningful a life as possible, through a specifically-tailored package of support which involves a full daytime, evening and weekend programme.

People we support can move between Residential care and Supported Living, depending on their needs

Supported Living

Autism Together's Supported Living service provides individualised support for autistic adults in a community setting. Working with registered social landlords, we offer bespoke homes for autistic adults in a variety of housing models, from single flats to shared accommodation.

Making the move from Residential to Supported Living

Reducing support needed and staffing

Living in their own flat in the community

Activities include:

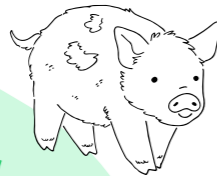
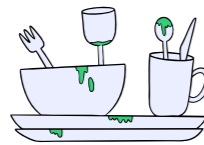
- Animal Care • Art • Café • Community-based excursions
- Cooking & life skills • Dance & performing arts • Gym • Media
- Music • Photography • Use of landscaping machinery

- Sensory development
- Skills development
- Work skills

Pathway to work, volunteering or paid employment

We celebrate positive outcomes with the people we support and their circle of support. We encourage people to reach beyond their current achievements and aim for the extraordinary.

Join Autism Together



Day Services



Residential Care

Right support

People with any level of support needs can live in Residential care, generally they are people that need support around them at all times.

Supported Living

Supported Living isn't just for people that are able to live completely independently, it's for everyone. The most important thing is having just the right level of support for the person in place. This can be just a few hours a week or can be intensive 1:1 or 2:1 support at all times.

Day Services

Different levels of support within Day Services allows people to access the most appropriate support for their needs. By focusing on people's strengths and interests, we are able to engage people and teach them new skills.

Right time

Support needs can vary throughout a person's life and people's support needs can change. Some may learn new skills and require less support, moving to Supported Living, where another person may develop physical disabilities and require a change in their accommodation

Support needs for individuals change throughout their lives, sometimes they need more support and sometimes they need less. This often depends on what is happening in their lives - times of change might mean that we need to increase someone's support but, equally, people can become more independent.

Day Services is often a step taken by people after leaving education, but it is also a service that can be accessed at any point on someone's journey. Day Services promote independence, skill building, communication, confidence and engagement.

Right location

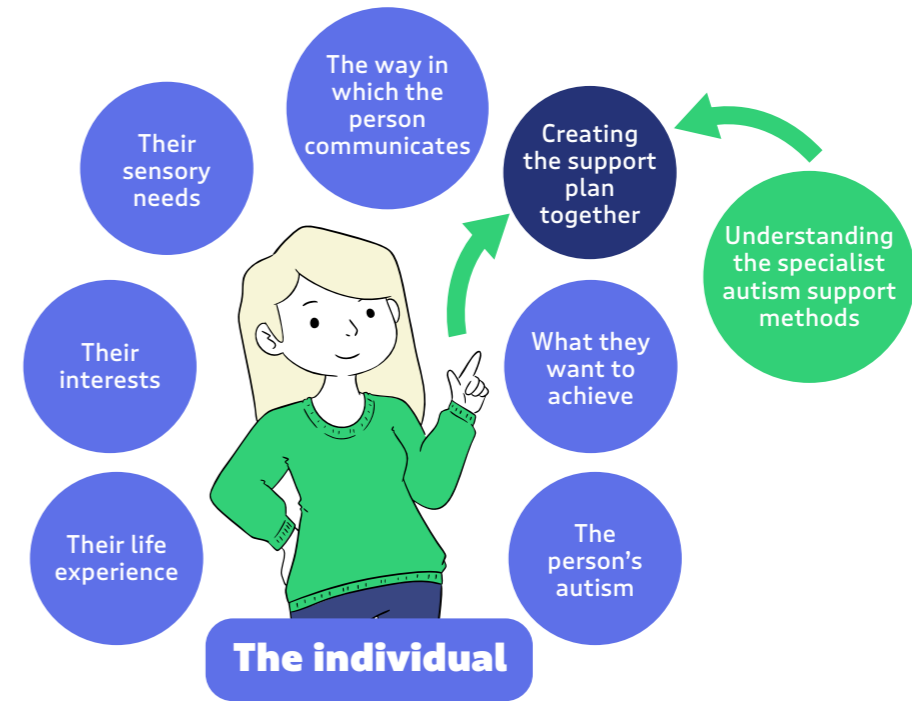
We have many settings in Residential care - some of our care homes are designed for highly complex individuals that need intensive support in bespoke settings. In contrast to this, we have community residential care homes that don't even look like care homes. You won't find any signs outside any of our houses telling you that they are care homes.

It's important that people live near their family and friends, and in areas and communities that are right for them.

Day Services has a range of sites across the region, and people can choose a service area that suits their needs. We promote individuals to move through our services into employment or volunteer opportunities in their local community, if they wish to do so.



Creating a support plan together



Getting to know a person, and then using that individual's preferred method of communication to help co-produce their assessment is the first step in the support journey with Autism Together.

Our approach starts from the point of contact, through triage, gathering information of what activities could be suitable for the individual wishing to access our services.

A Care Act Assessment must also have been completed and sent to our Admissions Team. Please contact adult social care services if this is not in place. After this, we will send out an 'Expression of Interest' form.

The next step is to apply a strengths-based assessment framework, to determine and

protect the person's independence, ability to make choices and their wellbeing. Offering this holistic approach enables us to establish and consider what the person wants to achieve, their hobbies, dreams and aspirations.

It also helps us understand if the individual has any sensory sensitivities, what environmental factors might impact upon them, how their autism presents and what their life experience has been so far.

Involving families and professionals around the person, and working in partnership to develop the assessment, can be fundamental to the final decision of whether Autism Together can meet that person's individual needs and offer suitable support provision.

How we support you

Assessing your needs

We need to find out more about you...



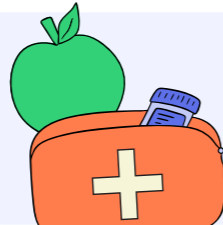
What are your sensory needs?



What are your hobbies?



What are your dreams for the future?



How is your health?



What do you like?



What don't you like?

Our staff and managers

Everyone is happy and friendly and interested in you. Our staff and managers receive specialist training about autism and how best to support you.

How will the service be funded?

Assessing Your Needs

We need to find out more about you...

Support Costs

These are the costs for the support from Autism Together. Each fee will be based on individual assessment of what support the person requires from Autism Together.

Your Fees

Support fees are generally paid by and agreed with either your local authority or health commissioners, depending on what level of support you need. All support fees are paid to Autism Together's finance department, who then deal with all finance issues.



Accessing Autism Together's services

We accept enquiries for our Day Services from individuals, their families and any professionals involved. Prior to making enquiries for support, you should have received a care act assessment. If you have not

then you should contact your local authority to request this. The local authorities can see what kind of support is needed, and if they will help to fund it. Once you have a care act assessment, the following steps take place...

Pathway to access our services

- 1** A telephone triage helps us find out about the person and ask if they have a social worker. We'll also ask them to complete an 'Expression of Interest' form.
- 2** Next, the person's social worker will share their most recent assessment with us.
- 3** A tour is then booked to see the service/stream which might best meet the person's needs and interests.
- 4** We will then start the assessment process and ask how that person would like to be involved in their assessment.
- 5** If we have assessed we can meet the person's support needs and a suitable placement is available, then a formal offer is made in writing to the local authority.
- 6** If placement within Autism Together is recommended, but currently unavailable, there is the option for the individual to be placed on a list until a placement becomes available, or there is the option to explore other service providers.
- 7** Once the local authority has approved our formal offer, a transition meeting is arranged to agree a start date and put the person-centred support package in place.





Admissions Team:

📞 0151 482 3126

✉️ admissions@autismtogether.co.uk

Monday to Friday 9am - 5pm

For further enquiries please contact:

General Enquiries:

📞 0151 334 7510

✉️ enquiries@autismtogether.co.uk

Monday to Friday 9am - 5pm

www.autismtogether.co.uk

Follow us on socials   [@autismtogetheruk](https://www.facebook.com/autismtogetheruk)

Wirral Centre for Autism, Oak House, 6 Tebay Road, Bromborough, Wirral, CH62 3PA

Reg. Charity Number: 1007878 Reg. Company Number: 2658268

